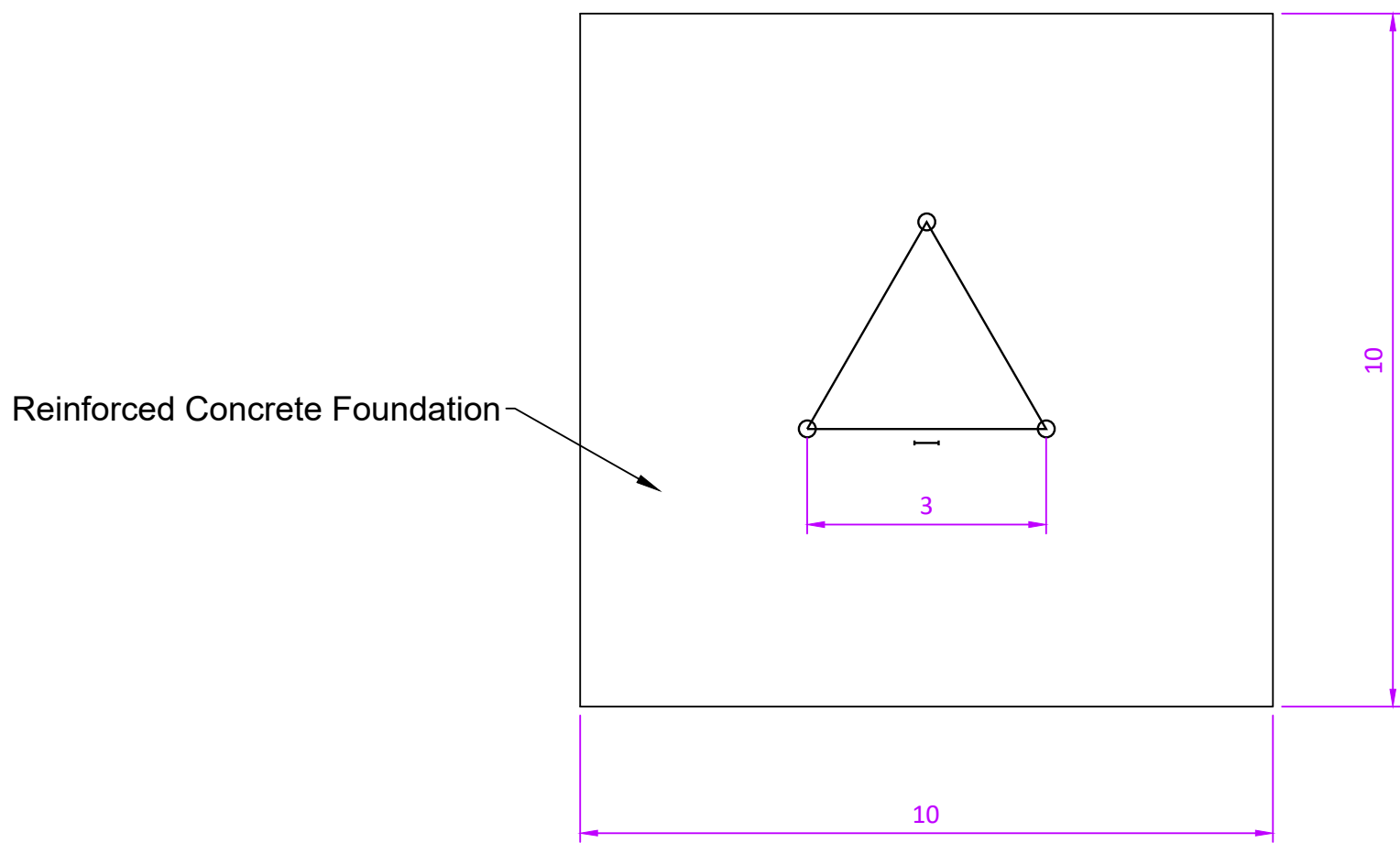
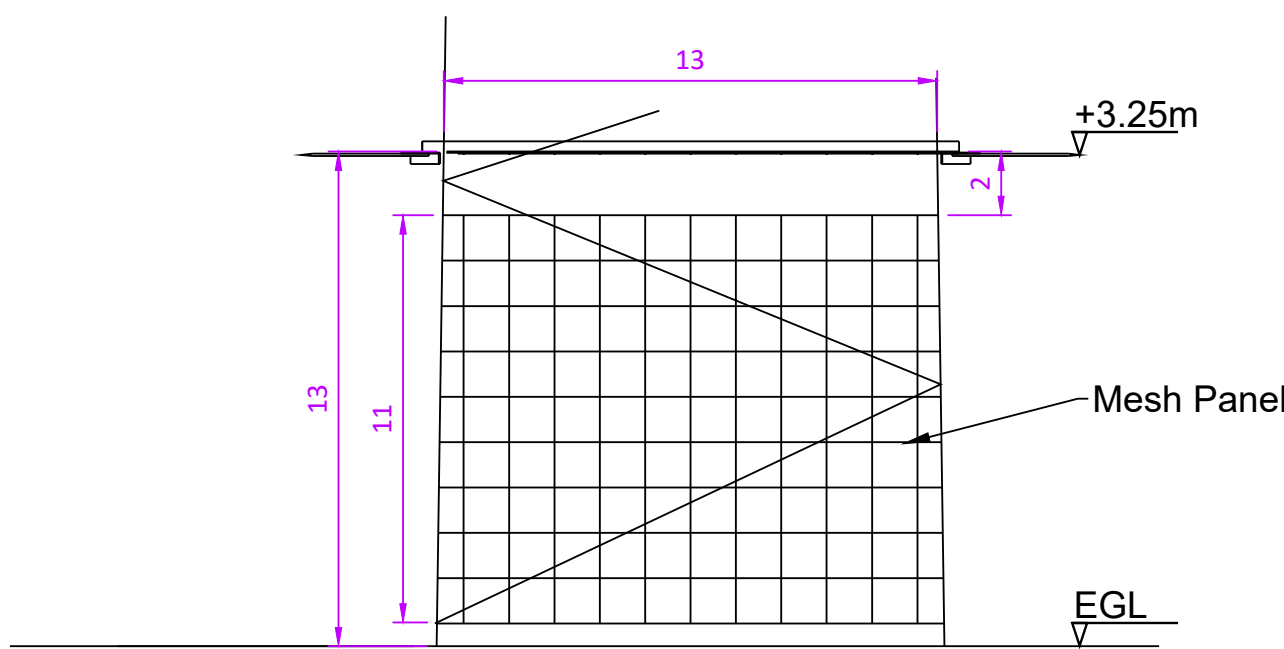


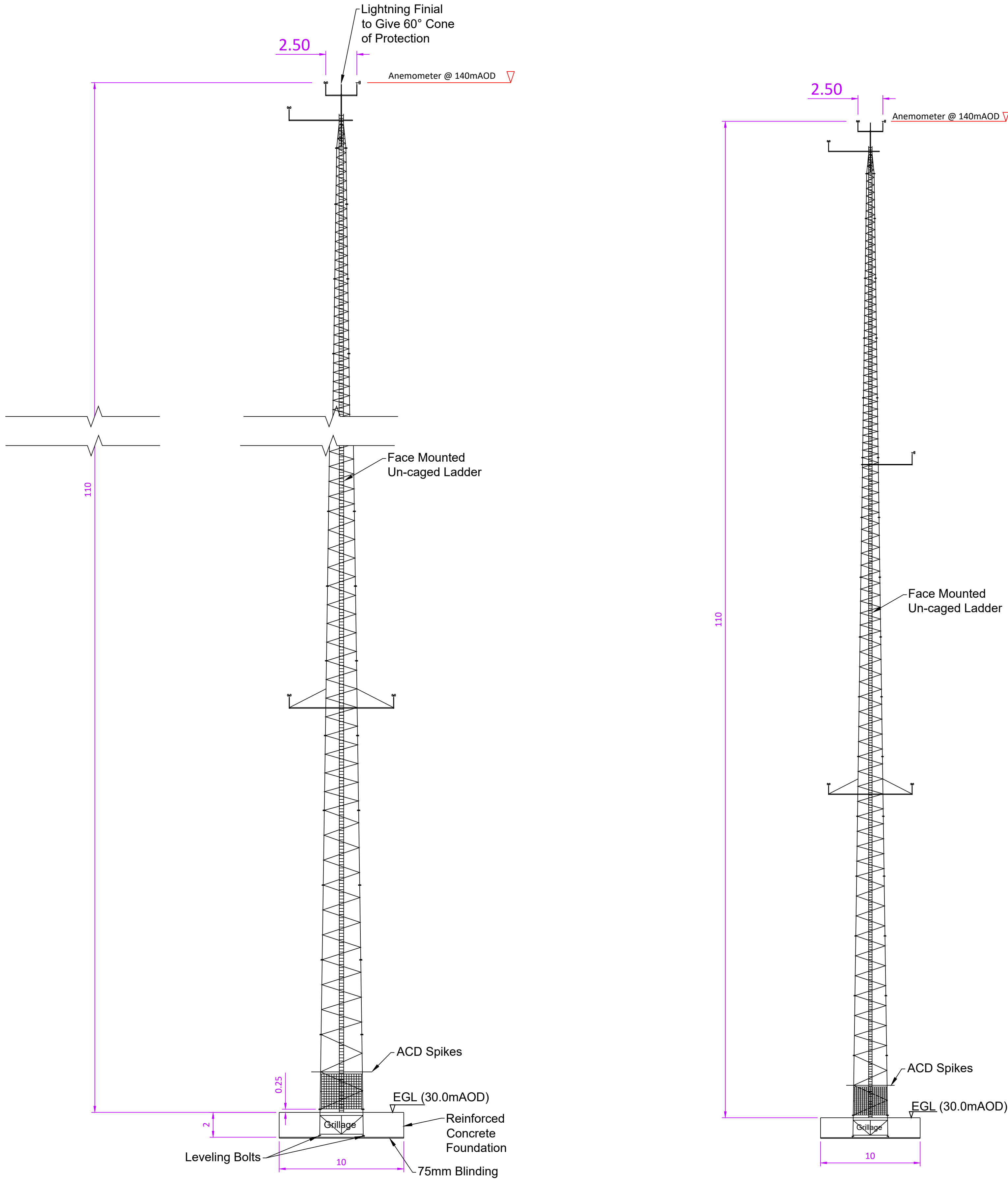
PLAN - ACD SPIKES  
Scale 1:200



PLAN  
Scale 1:100



ELEVATION - MESH PANEL  
Scale 1:200



ELEVATION  
Scale 1:200

FULL HEIGHT ELEVATION  
Scale 1:250

- NOTES:
- The tower is triangular lattice construction with circular hollow sections throughout.
  - Wind loading and design in accordance with Eurocode Standards (NA ROI).
  - All steelworks shall be supplied in accordance with the current European Standards EN 10025-2:2004 and EN 10210-1:2006 of grades S275 and S355.
  - Fabrication complies with the CE requirements to EXC2 level and all certificates with CE marking will be provided.
  - All connections for bracing members shall be of bolted type of grade 8.8 or 10.9 complete with nuts and spring washers.
  - All steelworks shall be hot dip galvanised to European Standard EN ISO 1461 with minimum average coating of 85 microns.
  - Lightning Finial would be fitted to tower top and each leg of the tower should be connected to adequate earth system with copper tapes.

If Applicable : Ordnance Survey Ireland Licence No. EN 0001220 © Ordnance Survey Ireland and Government of Ireland

Rev.	Description	App By	Date
A	ISSUE FOR PLANNING	JH	13.08.25

PROJECT	CLIENT		
SHANCLOON WIND FARM CO. GALWAY	<b>RWE</b>		
SHEET	110m MET MAST DETAILS	Date 13.08.25 Drawn by POR Checked by RM	Project number P20-306 Drawing Number P20-306-0300-0012 Scale (@ A1) 1:200 Rev A